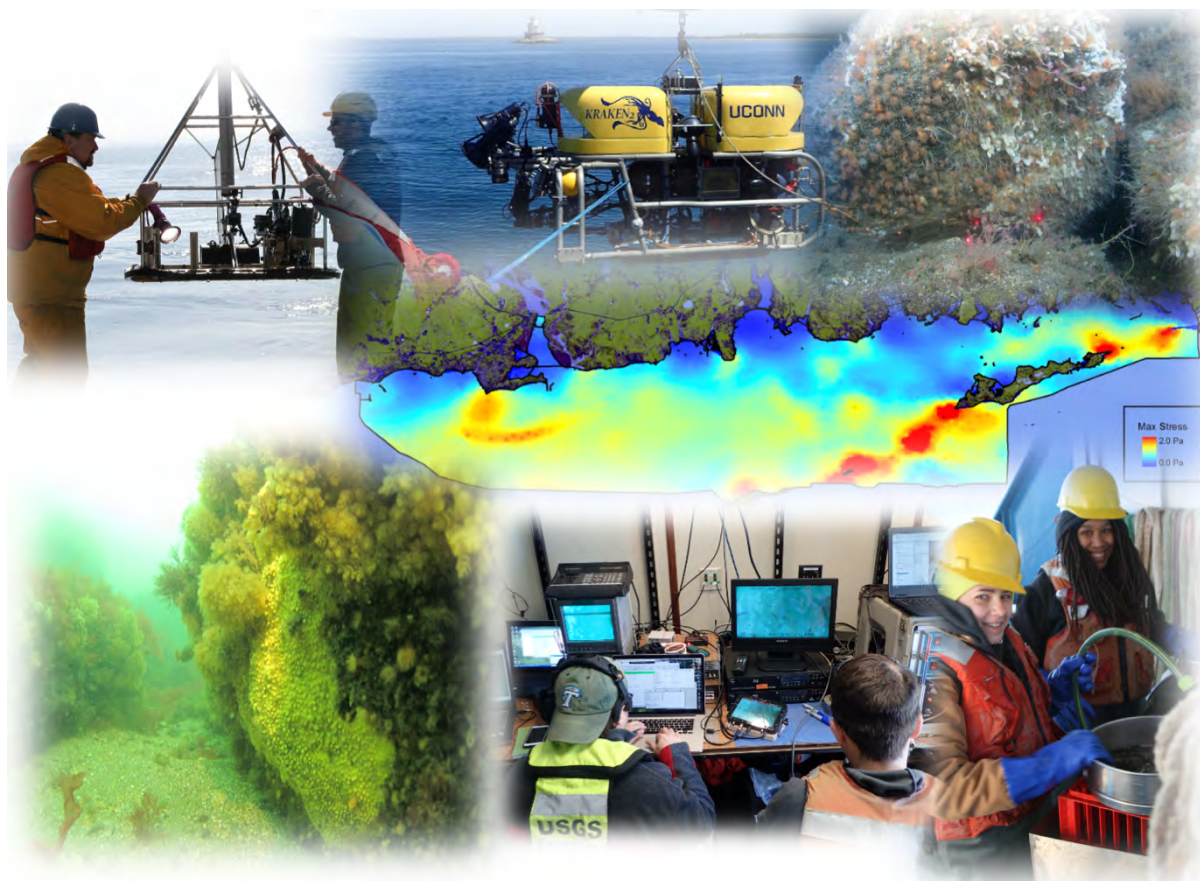


The Long Island Sound Habitat Mapping Initiative Phase II – Eastern Long Island Sound



Final Report: Appendices

Submitted by:
The Long Island Sound Mapping and Research Collaborative
(LISMaRC)

August 27, 2021
Revised June 10, 2022



Appendix 3-6: Physical Oceanographic Characterization Station Locations

Bottom Mooring Station Locations

Table 6.1-1. Spring 2017 Moored Frames - Station Location and Deployment Summary

Station ID	Latitude	Longitude	Sensors	Deploy Date (2017)	Recovery Date (2017)	Water Depth (m)	Deployment Length (days)
SOW1	41.303300°	-71.903817°	-AQD 2 kHz HR -SBE37 CT/P -ADCP 600 kHz	30 MAR	7 JUN	22.6	70
EID2	41.325933°	-71.927667°	-AQD 2 kHz HR -SBE37 CT/P -ADCP 1200 kHz	28 MAR	7 JUN	4.6	72
WID3	41.310900°	-71.968917°	-AQD 2 kHz HR -SBE37 CT/P -ADCP 1200 kHz	28 MAR	8 JUN	5.5	73

Table 6.1-2. Winter 2017-2018 Moored Frames - Station Location and Deployment Summary

Station ID	Latitude	Longitude	Station Depth (meters)	RDI ADCP SN/Freq	SBE 37 SN	AQD SN
SOW1	41 18.1977	-71 54.2284	21.5	1094/600	9695	8445
EID2	41 19.5557	-71 55.6593	3.9	10463/1200	9673	8455
WID3	41 18.6537	-71 58.1355	4.8	10462/1200	9696	8432
WFW4	41 17.4727	-72 02.2383	10.3	6615/600	9694	8438
SFW5	41 16.2218	-71 58.3172	6.3	11708/1200	9674	8554

Spring 2017 Moored Frames - Station Locations

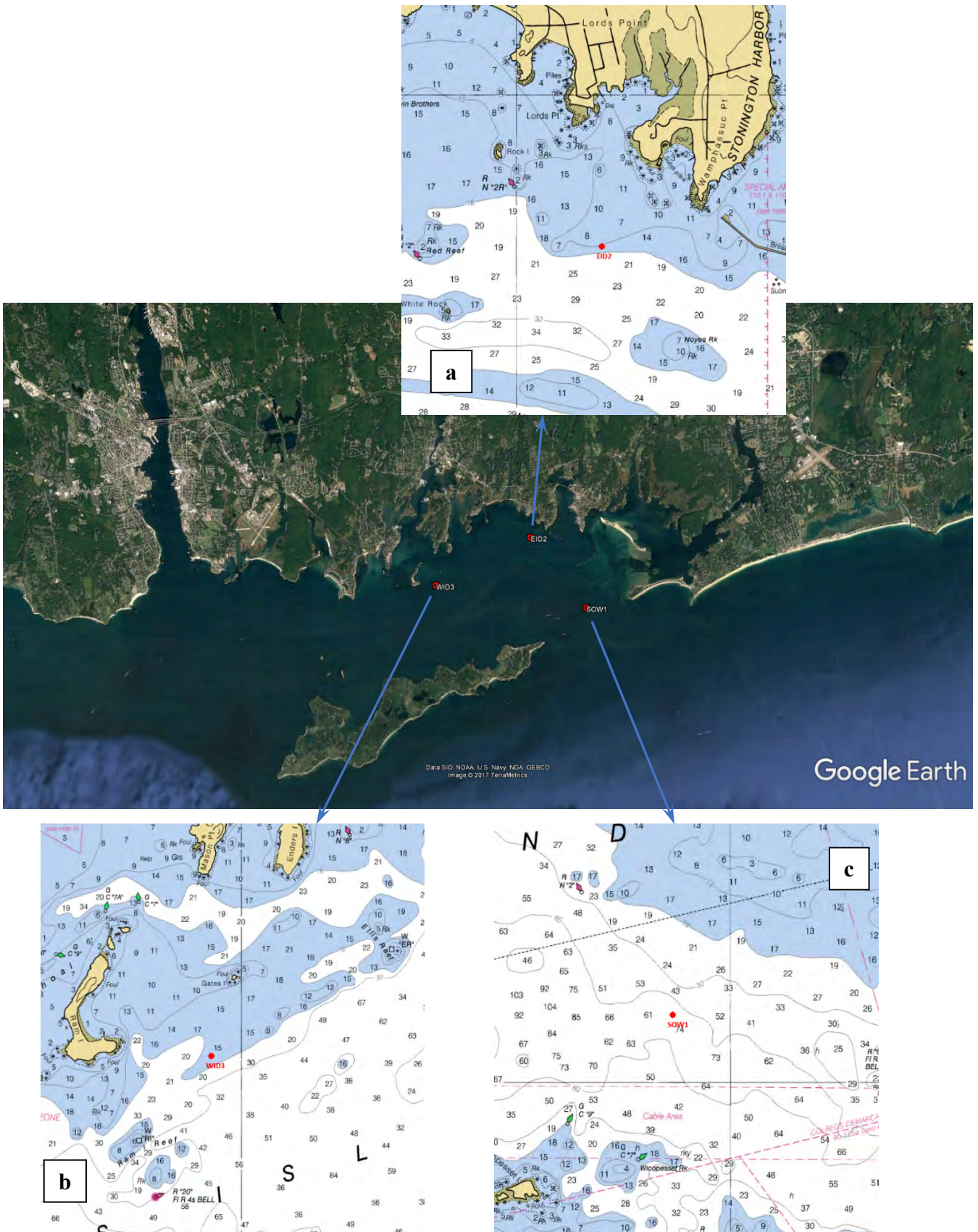


Figure 6.1-1. Location of the three frames deployed in Fishers Island Sound during Spring of 2017, a) detail of bathymetry (in feet) near EID2 - the Eastern Inside Dissipative station, b) bathymetry (in feet) at WID3 - Western Inside Dissipative station, c) bathymetry (in feet) at SOW1 - Southern Outside Wave station.

Winter 2017-2018 Moored Frames - Station Locations



Figure 6.1-2. Location of the five bottom moored frames in Fishers Island Sound for the Winter 2017-2018 data collection campaign. Yellow stations were occupied during the Spring 2017 campaign, the two red stations are new locations.

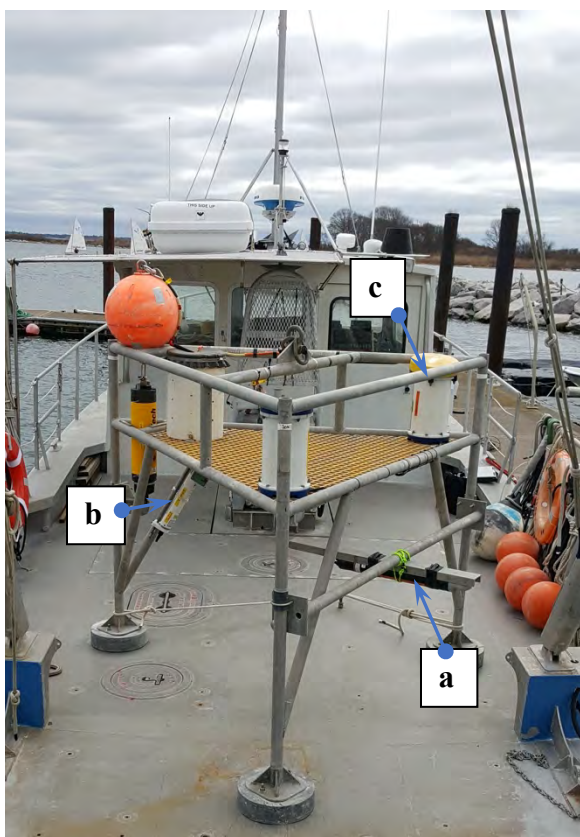


Figure 6.1-3. Frame deployed at SOW1 – all frames were equipped similarly, with a) Nortek High Resolution downward looking Aquadopp profiler, b) Sea-Bird Instruments Model 37 SMP Conductivity/Temperature/Pressure sensor, and c) RD Instruments acoustic Doppler current profiler with wave array firmware.

Conductivity, Temperature and Depth (CTD) Station Locations

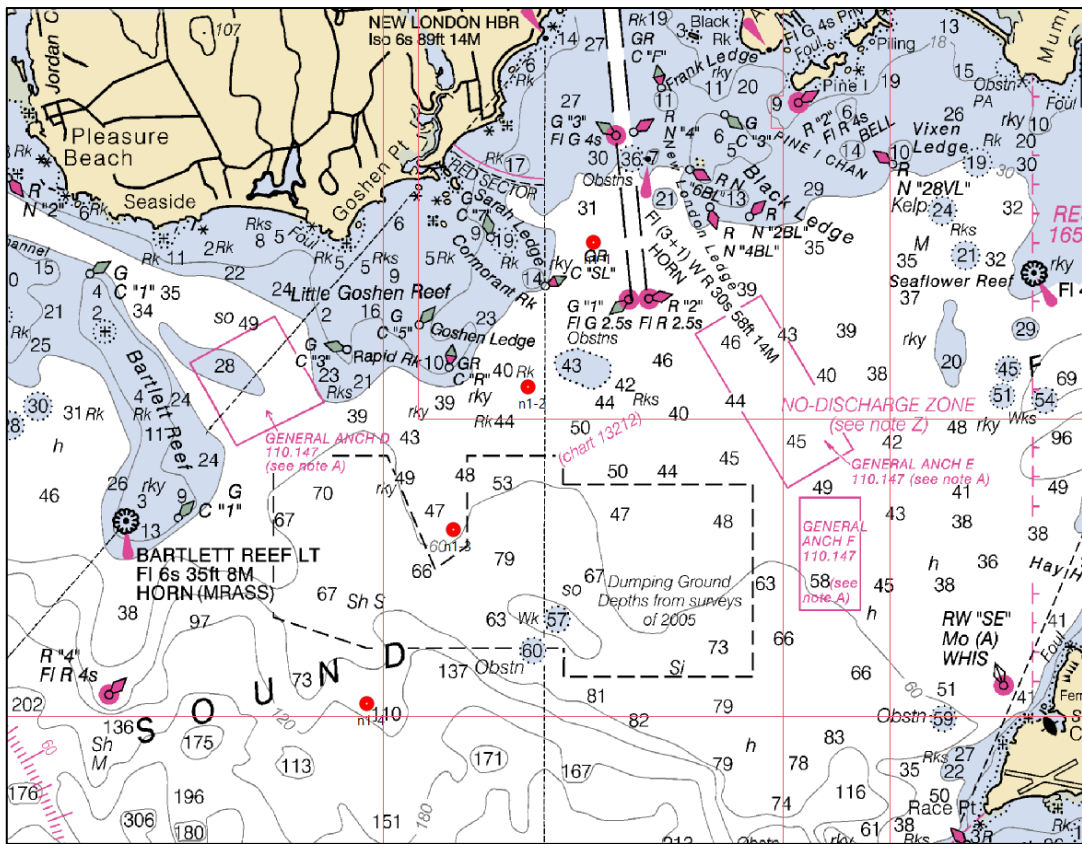
Table 6.1-3. CTD 12 Hour Survey – Winter 2017 - Station Locations

Station ID	Latitude	Longitude	Station Depth (meters)	N Casts
N1-1	41 17.9177	72 05.0212	6.1	5
N1-2	41 17.1696	72 05.4720	10.9	10
N1-3	41 16.4313	72 05.9873	20.1	10
N1-4	41 15.5349	72 06.5856	33.5	6
N2-1	41 18.1732	72 10.7515	9.8	6
N2-2	41 17.3729	72 10.7154	14.0	12
N2-3	41 16.5301	72 10.6272	17.7	12
N2-4	41 15.5604	72 10.5426	32.6	7
N3-1	41 17.1089	72 14.6969	16.5	6
N3-2	14 16.1559	72 14.6969	17.4	11
N3-3	41 15.2662	72 14.6969	28.0	11
N3-4	41 14.3049	72 14.6969	33.8	6
N4-1	41 15.5647	72 20.4353	5.8	6
N4-2	41 15.0995	72 19.6817	8.5	11
N4-3	41 14.5568	72 18.7853	32.3	11
N4-4	41 13.9125	72 17.7541	36.6	6
N5-1	41 17.7994	72 02.5349	9.1	8
N5-2	41 16.8567	72 02.5349	12.5	8
N5-3	41 17.3042	72 00.0604	14.0	8
N5-4	41 18.1633	72 00.0604	9.8	9

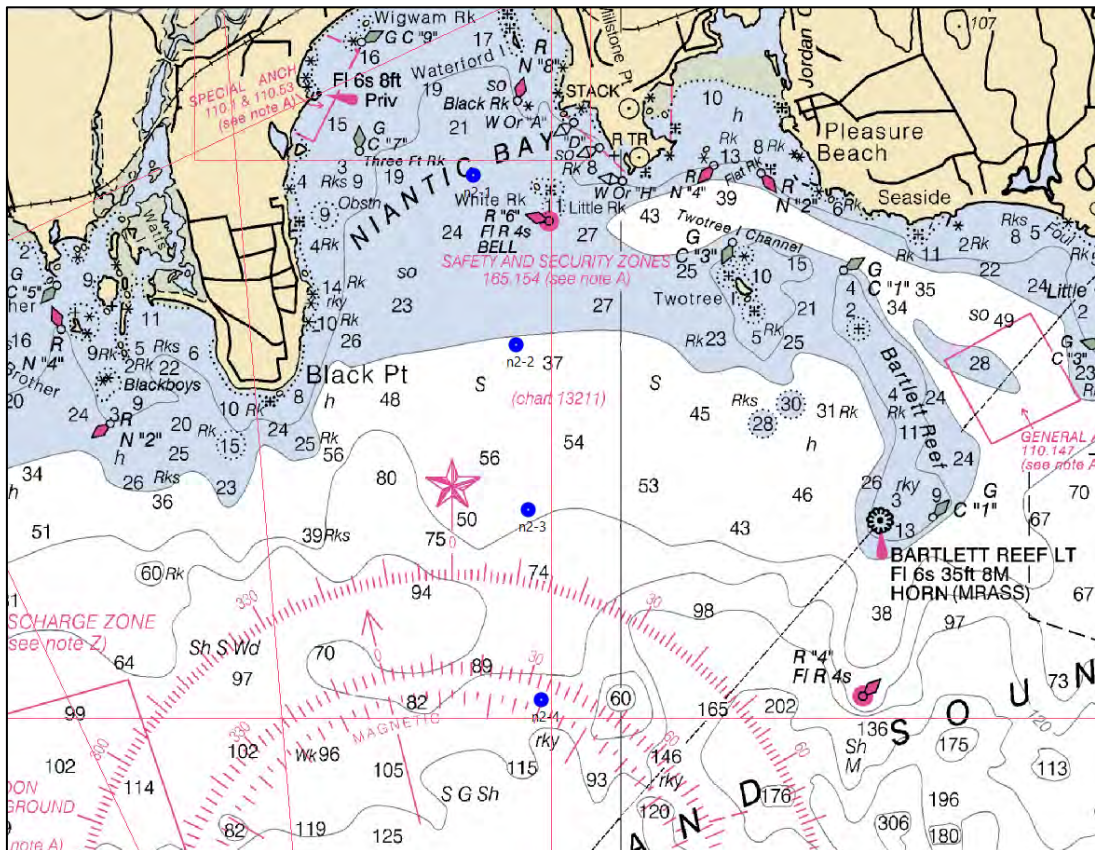
Table 6.1-4. CTD 12 Hour Survey - Spring 2018 - Station Locations

Station ID	Latitude	Longitude	Station Depth (meters)	N Casts
N0-1	41 17.6108	71 51.4745	21.1	7
N0-2	41 17.0093	71 53.4086	22.0	7
N0-3	41 16.3598	71 53.0402	42.9	7
N0-4	41 17.0412	71 51.0424	36.7	8
N1-1	41 18.8733	71 55.3366	9.5	8
N1-2	41 18.8733	71 57.3814	16.4	8
N1-3	41 18.0035	71 57.3814	19.4	8
N1-4	41 18.0035	71 55.3366	20.0	8
N21-1	41 17.9177	72 05.0212	6.1	7
N21-2	41 17.1696	72 05.4720	10.9	12
N21-3	41 16.4313	72 05.9873	20.1	13
N21-4	41 15.5349	72 06.5856	33.5	7
N22-1	41 18.1732	72 10.7515	9.8	6
N22-2	41 17.3729	72 10.7154	14.0	11
N22-3	41 16.5301	72 10.6272	17.7	12
N22-4	41 15.5604	72 10.5426	32.6	6
N23-1	41 17.1089	72 14.6969	16.5	6
N23-2	14 16.1559	72 14.6969	17.4	12
N23-3	41 15.2662	72 14.6969	28.0	12
N23-4	41 14.3049	72 14.6969	33.8	7
N24-1	41 15.5647	72 20.4353	5.8	6
N24-2	41 15.0995	72 19.6817	8.5	12
N24-3	41 14.5568	72 18.7853	32.3	12
N24-4	41 13.9125	72 17.7541	36.6	7
N6-1	41 14.7994	72 31.4255	9.8	7
N6-2	41 13.8567	72 31.4255	26.1	13
N6-3	41 13.3042	72 31.4255	32.5	13
N6-4	41 12.1633	72 31.4255	17.2	7

CTD 12 Hour Survey Winter 2017- Station Locations

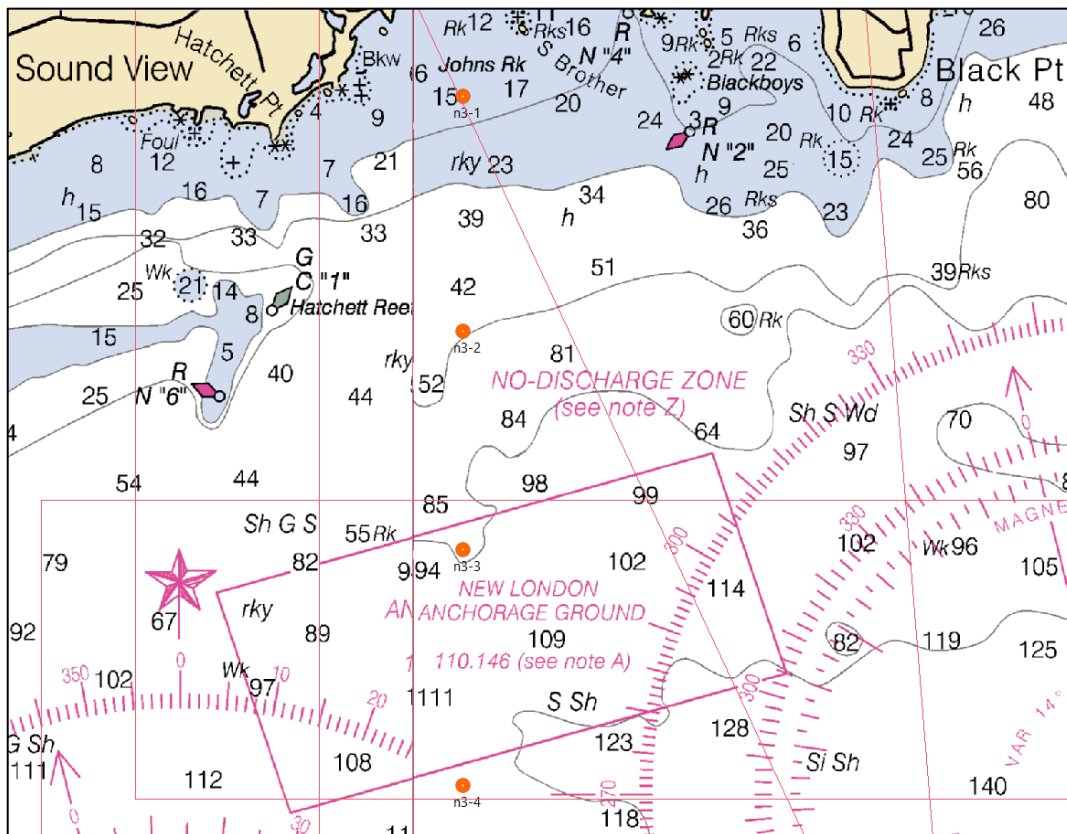


Nov 28-29th
N1 Transect

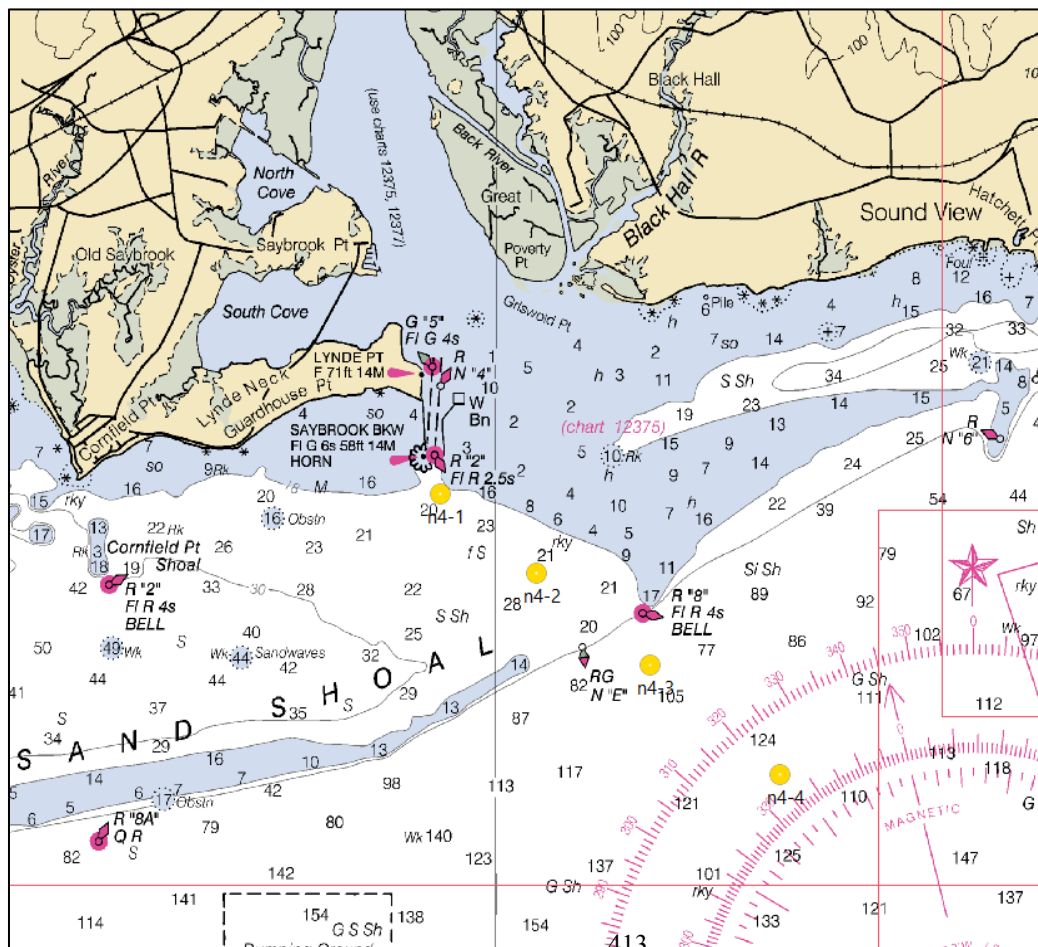


Nov 29-30th
N2 Transect

CTD 12 Hour Survey Winter 2017- Station Locations (cont'd)

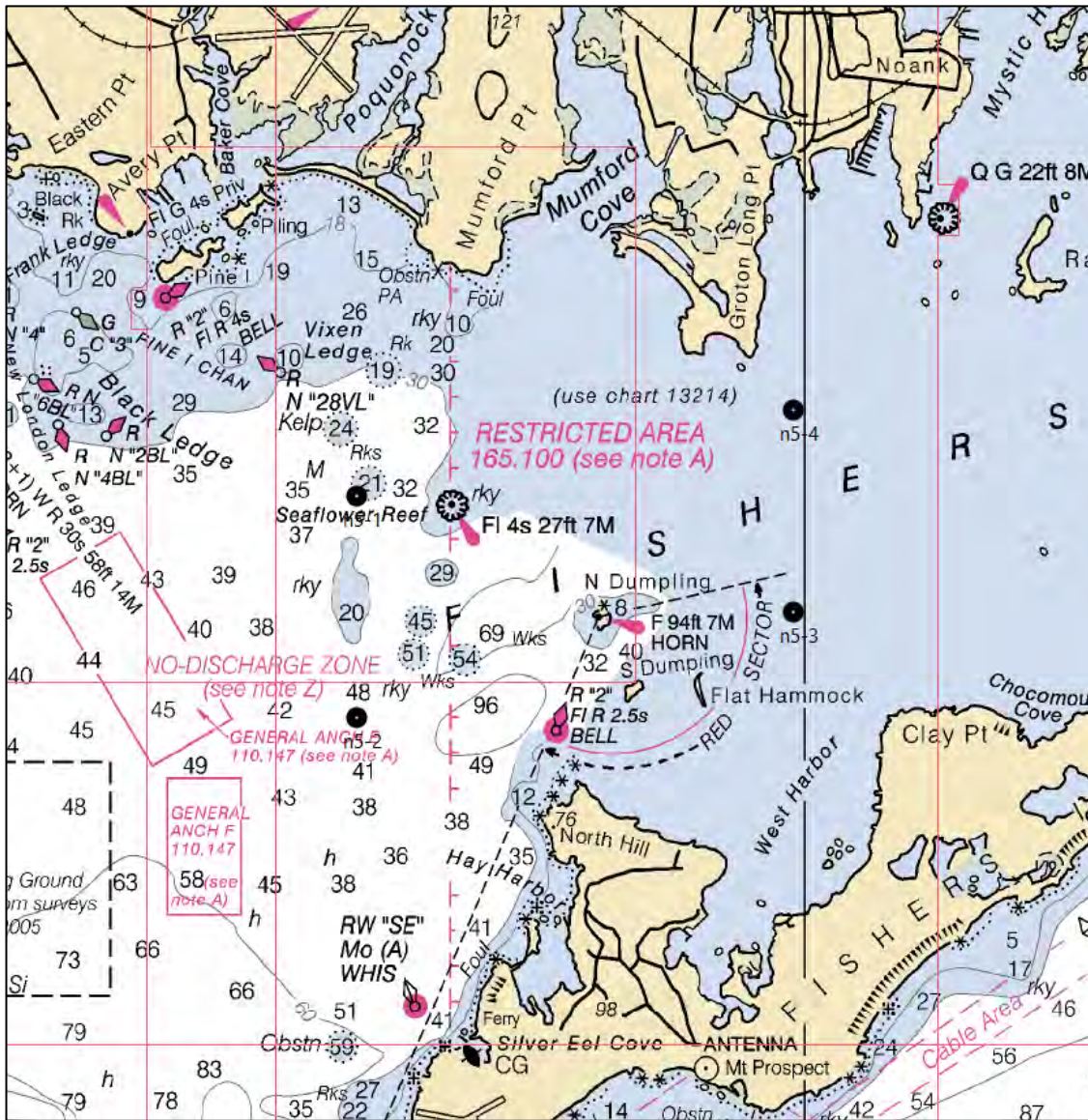


Nov 30-Dec 1
 N3 Transect
 24 casts



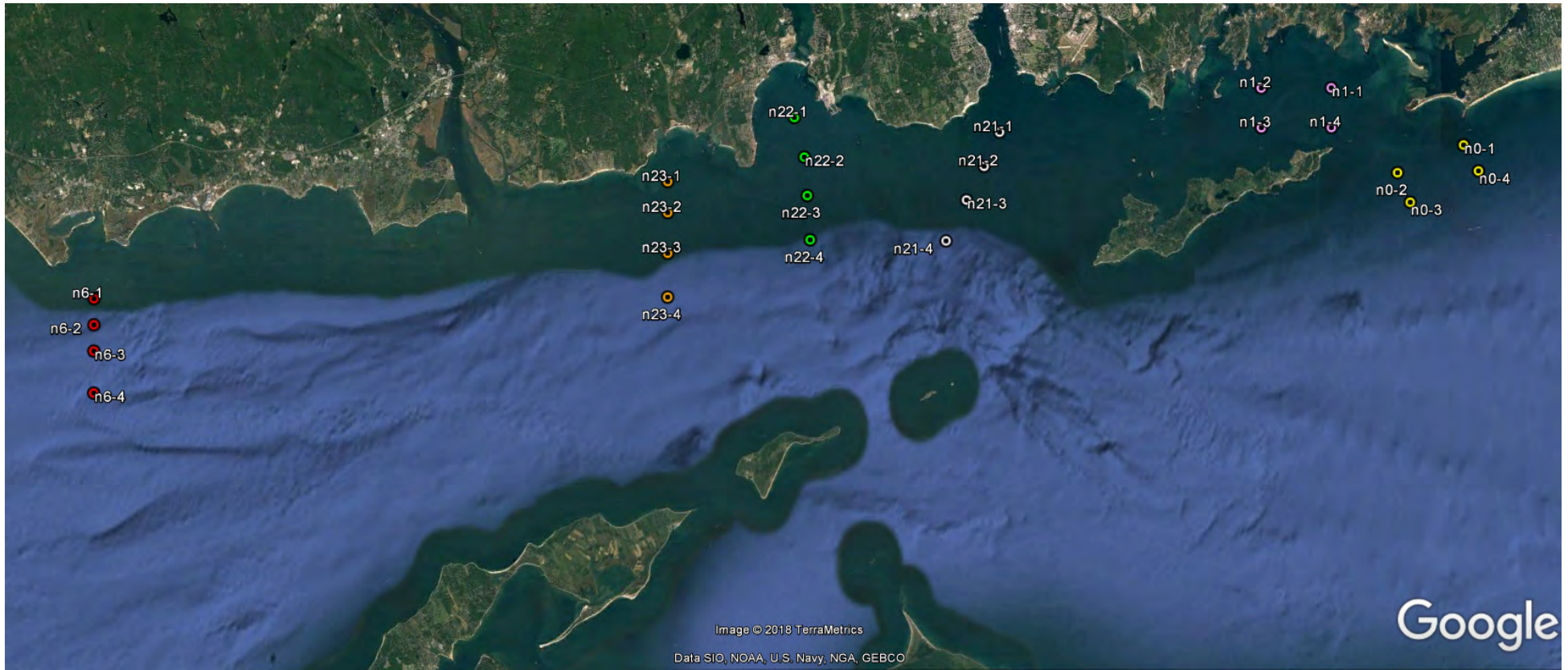
Nov 30-Dec 1
 N4 Transect
 24 casts

CTD 12 Hour Survey Winter 2017- Station Locations (cont'd)

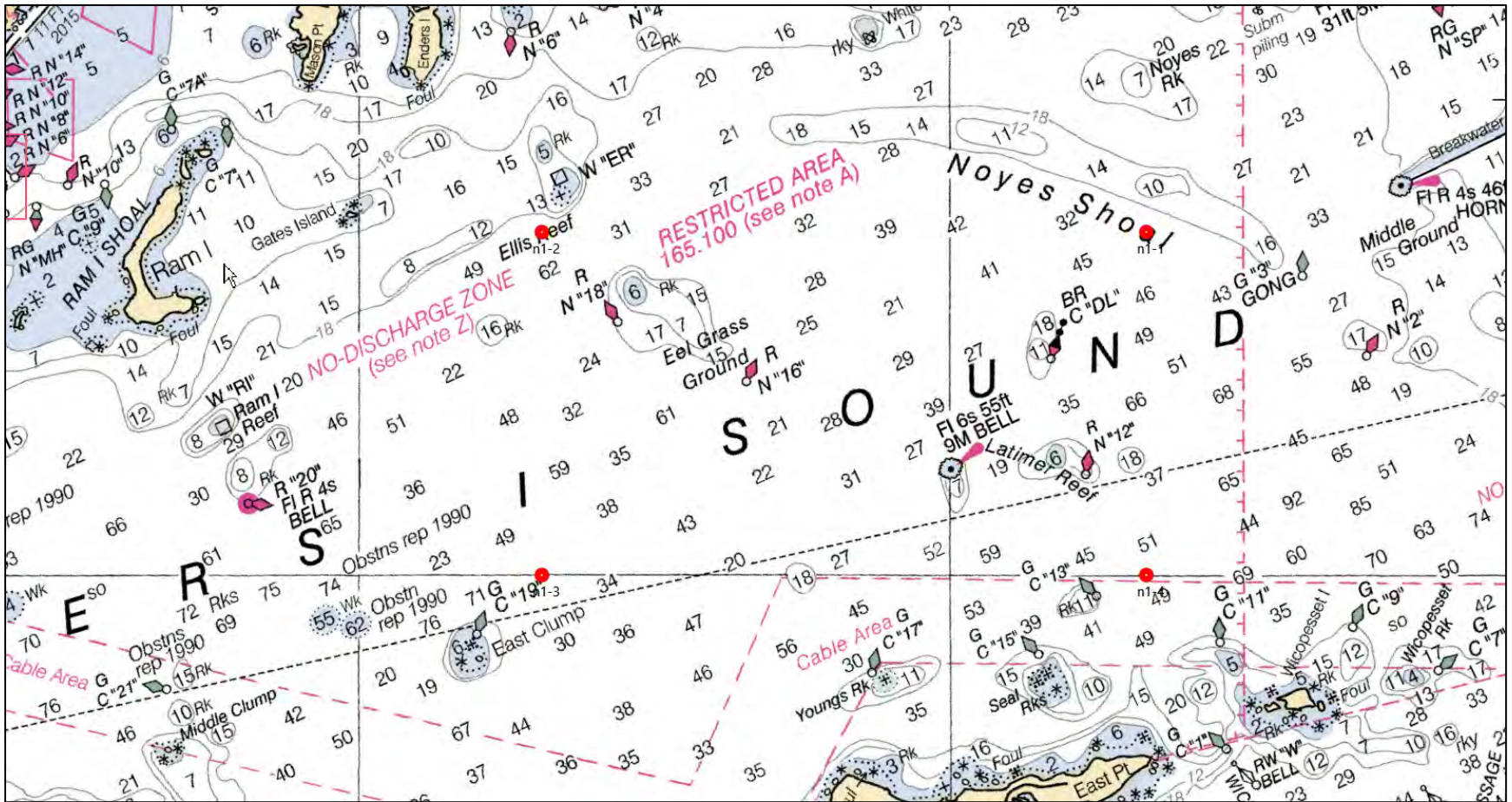


Nov 30-Dec 1
 N5 Transect
 22 casts

CTD 12 Hour Survey - Spring 2018 - Station Locations

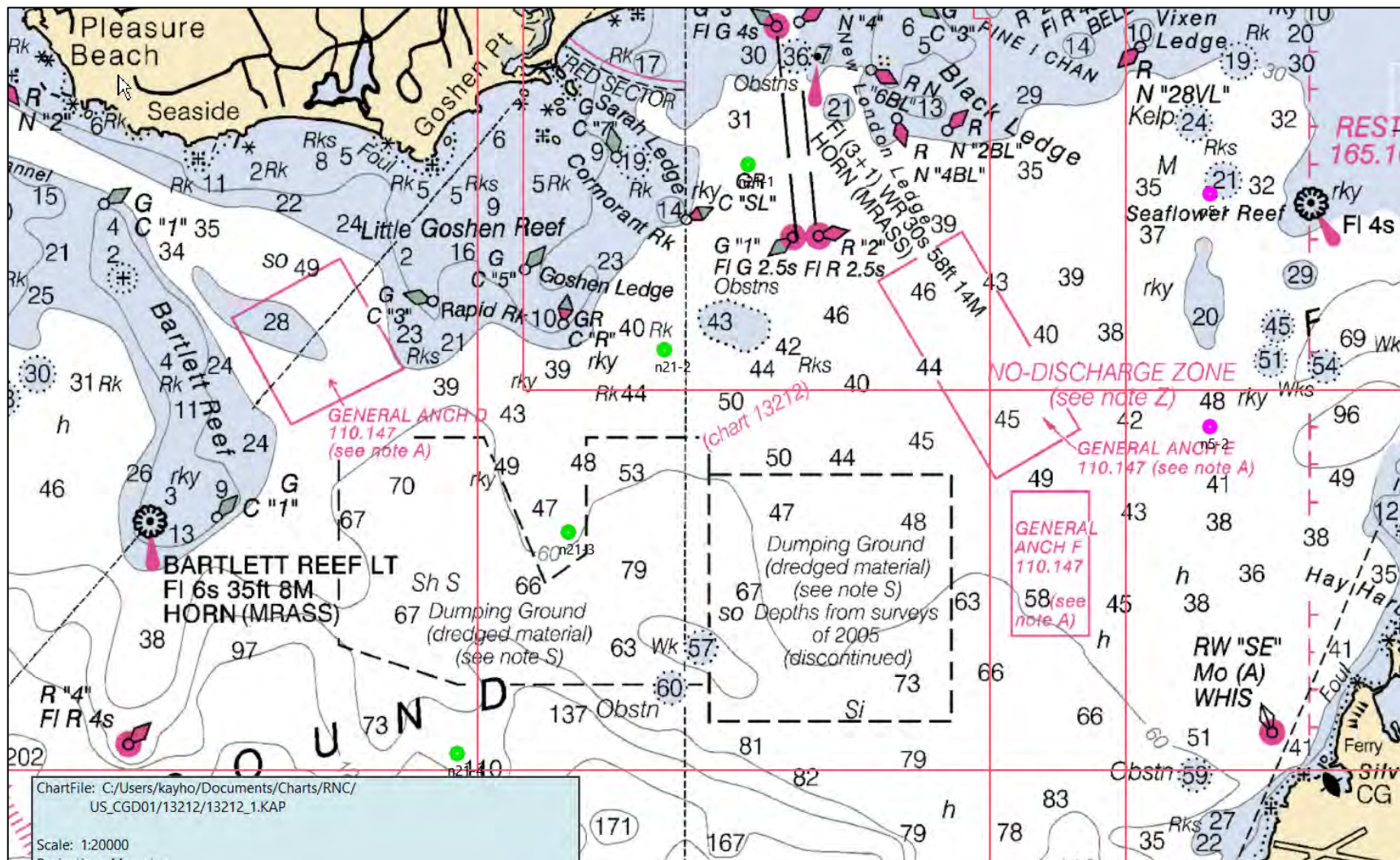


CTD 12 Hour Survey - Spring 2018 - Station Location Detail



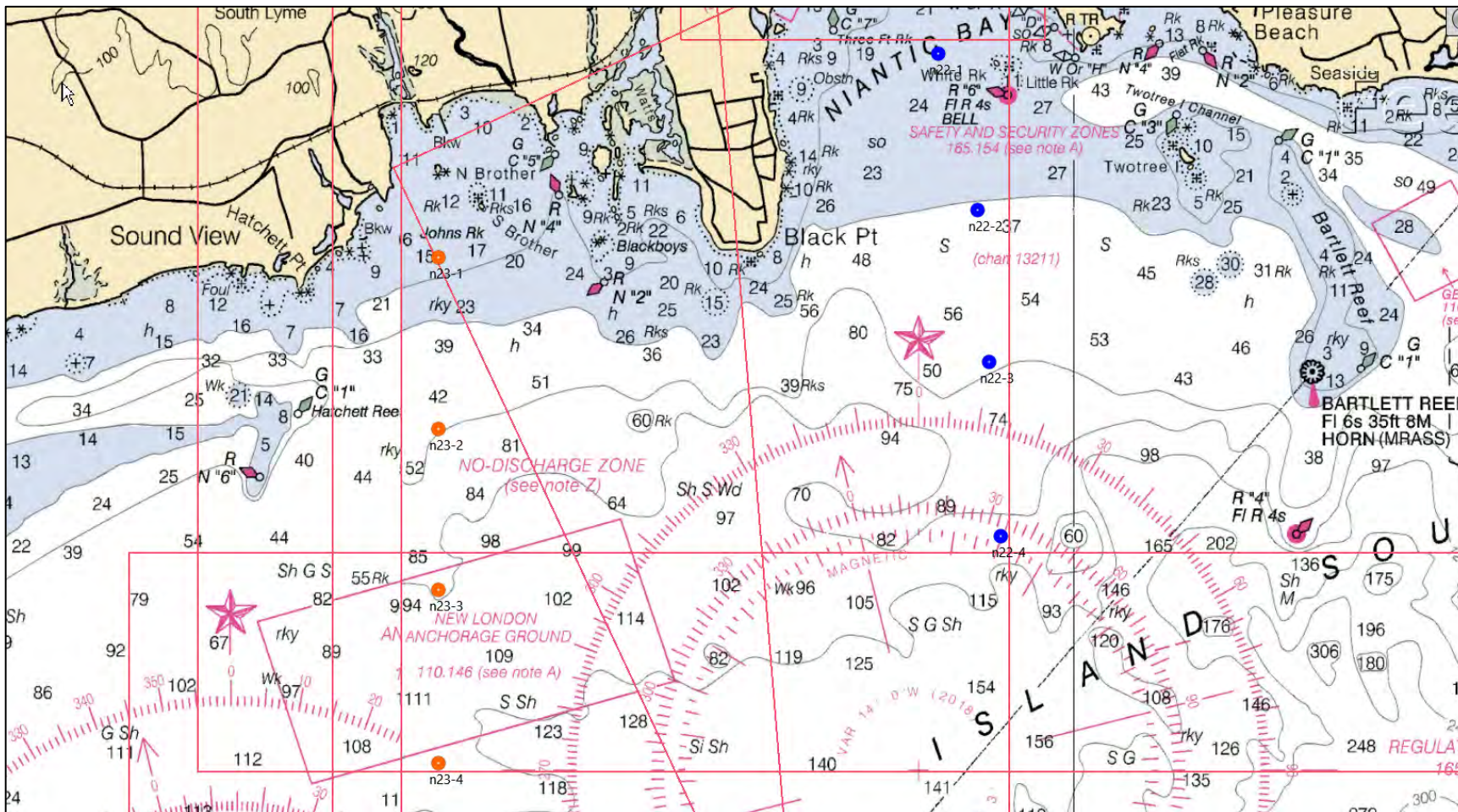
May 8-9th
 N1 Transect

CTD 12 Hour Survey - Spring 2018 - Station Location Detail (cont'd)



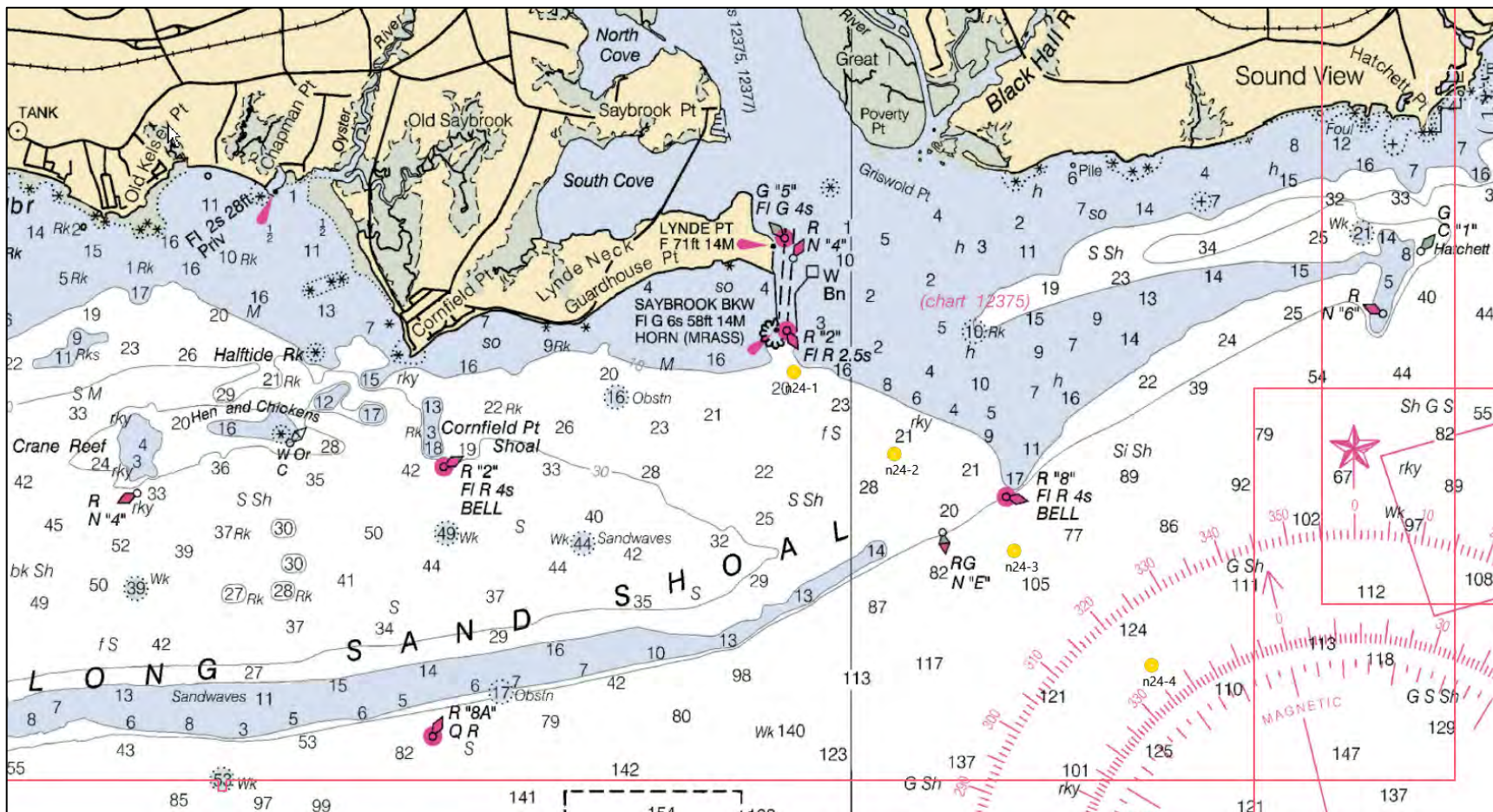
May 9-10th
N21 Transect (repeat from Nov 2017)
--

CTD 12 Hour Survey - Spring 2018 - Station Location Detail (cont'd)



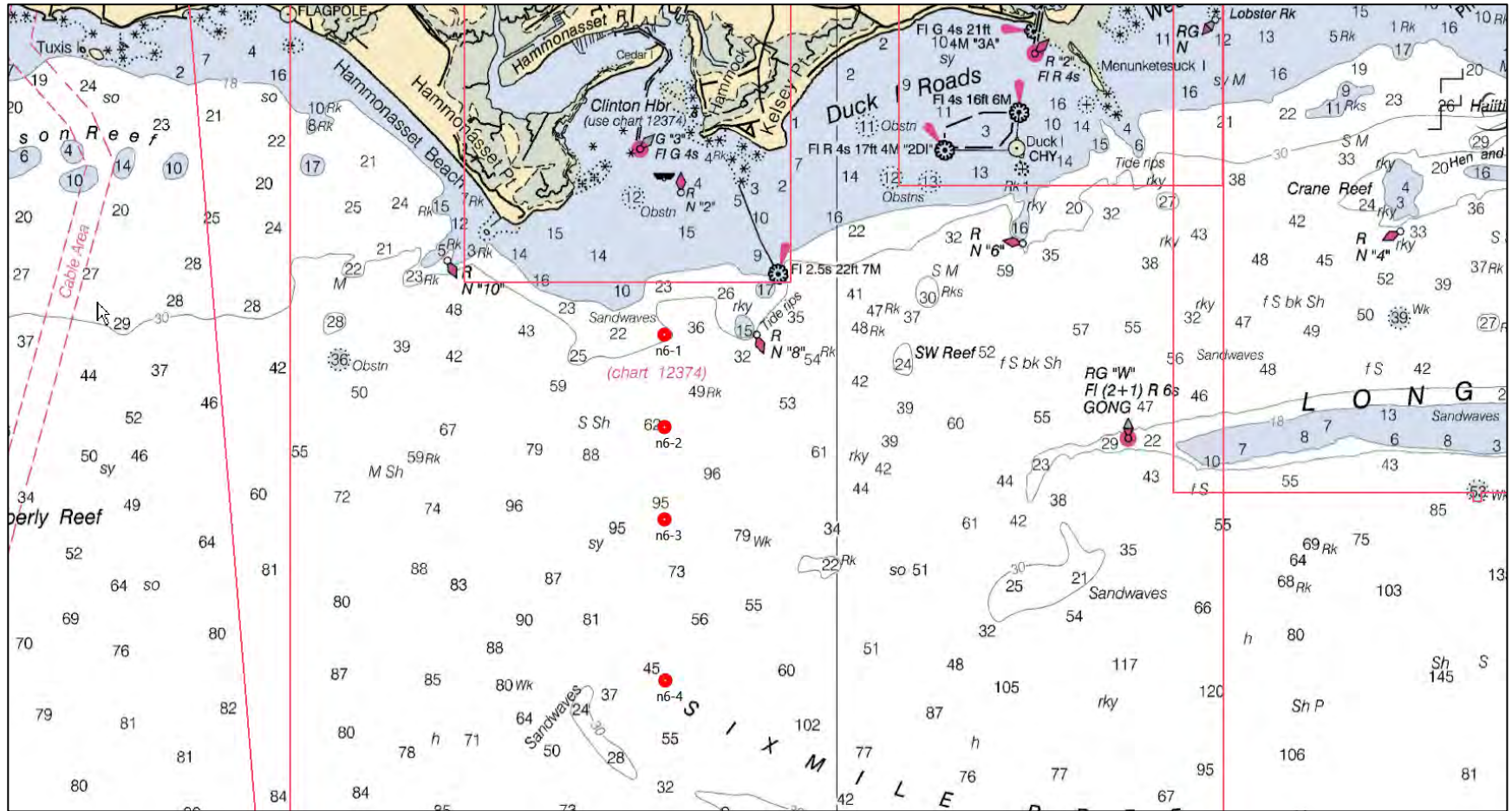
May 10-11th
 N22 Transect (repeat from Nov 2017), N23 Transect

CTD 12 Hour Survey - Spring 2018 - Station Location Detail (cont'd)



May 12-13th
 N24 Transect (repeat from Nov 2017)
 --

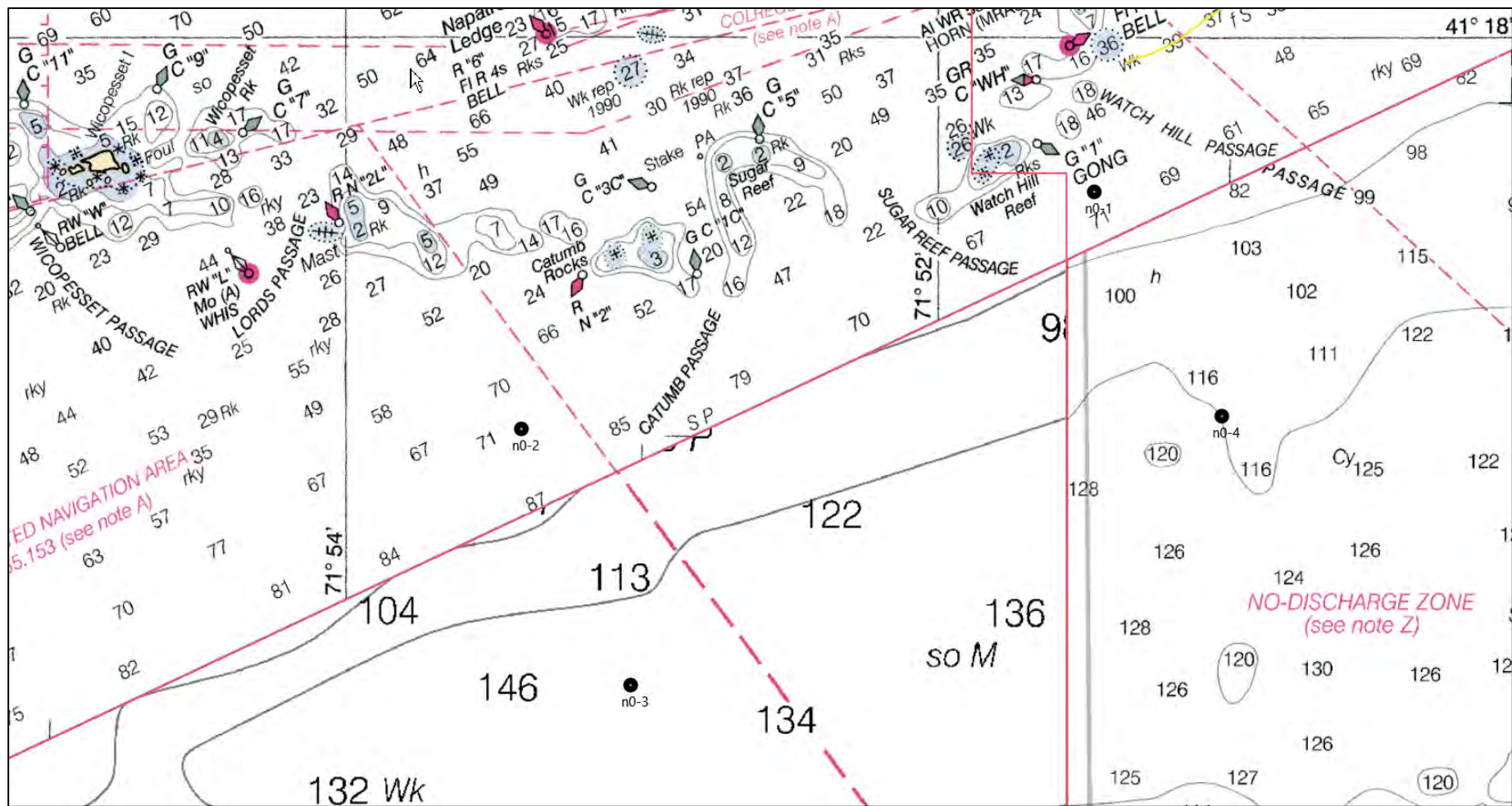
CTD 12 Hour Survey - Spring 2018 - Station Location Detail (cont'd)



May 13-14th

N6 Transect

CTD 12 Hour Survey - Spring 2018 - Station Location Detail (cont'd)



May 14-15th
 NO Box